

# Technical Datasheet

## HI-CONTACT™ 2-PASS COLD PLATE



### HI-CONTACT™ LIQUID COLD PLATE

Boyd Hi-Contact™ tube liquid cold plates feature a high performance assembly utilizing a continuous tube press fit into an extruded aluminum plate. The patented geometry used in the Boyd Hi-Contact™ process moves the fluid closer to the device generating heat, achieving the best thermal performance from a tube cold plate.

To further increase the performance of Boyd's Hi-Contact™ liquid cold plates, a thermal epoxy is applied to the joint to provide a gap free thermal interface between the tube and the plate.

### AVAILABLE OPTIONS

- *Tube Material: Stainless Steel, Cupronickel*
- *Finishes: AavSHIELD, AavSHIELD<sup>3</sup>*

### PART NUMBERS

416401U00000G – Unfinished



### FEATURES & BENEFITS:

- Cost Effective
- High Performance Leak Free Joints
- Hi-Contact™ for Better Heat Transfer

### HI-CONTACT™ PRODUCT SPECIFICATIONS

Property	Details
Plate Details	Extruded Aluminum
Tube Material	Copper
	9.5mm O.D. x 1.24mm wall
Standard Finish	Unfinished
Epoxy	Aluminum Filled - High Thermal Conductivity

Measurement	mm	in
Length	57.15	2.25
Width	57.15	2.25
Thickness	15.24	0.60

NOTICE: The information included in this data sheet is believed to be accurate and reliable. BOYD assumes no responsibility for end use applications and no performance warranty is expressed or implied.

# Technical Datasheet

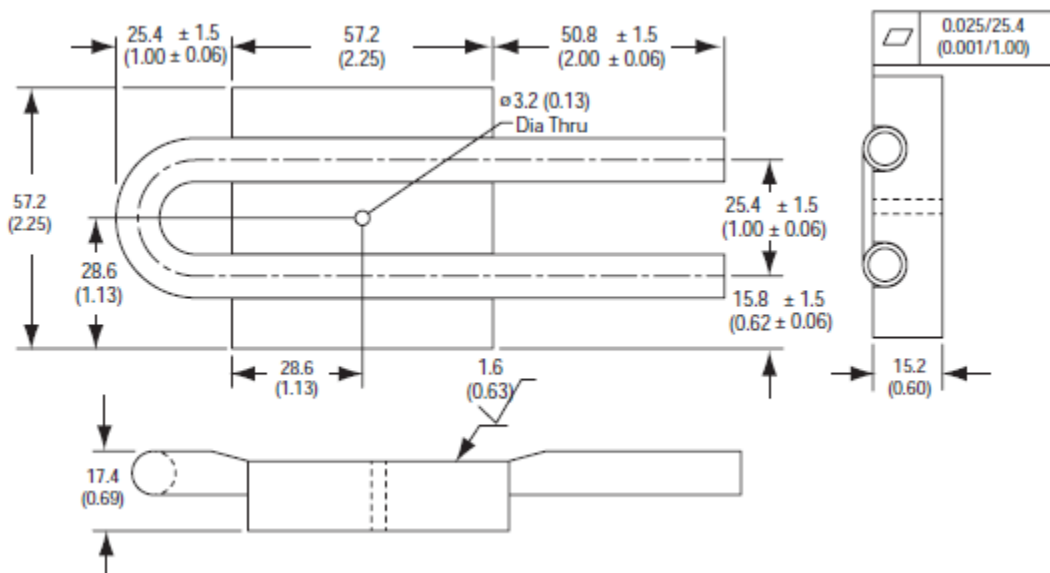
## HI-CONTACT™ 2-PASS COLD PLATE

**BOYD**  
TRUSTED INNOVATION

### MECHANICAL

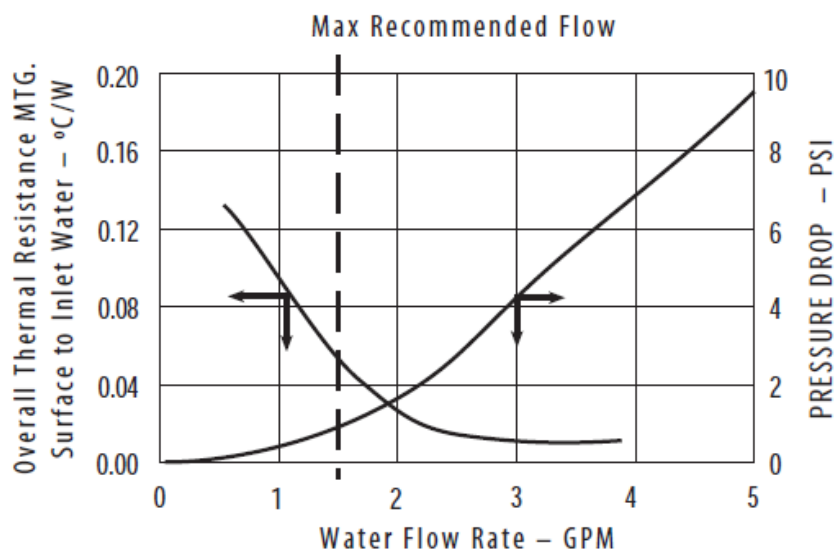
Dimensions are shown in mm

Figure 1



### PERFORMANCE – 2 PASS

Figure 2



NOTICE: The information included in this data sheet is believed to be accurate and reliable. BOYD assumes no responsibility for end use applications and no performance warranty is expressed or implied.