

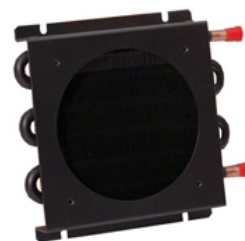


### COPPER TUBE-FIN HEAT EXCHANGERS 6000 SERIES

#### PRODUCT DESCRIPTION

Both the OEM Coils and 6000 Series copper tube-fin heat exchangers offer high performance and reliability. The 6000 Series heat exchanger has a different tube configuration, uses copper fin is painted black for corrosion resistance and includes a fan plate.

The 6000 Series is an attractive, high performance heat exchanger that delivers efficient heat transfer and maximum reliability in a compact package.



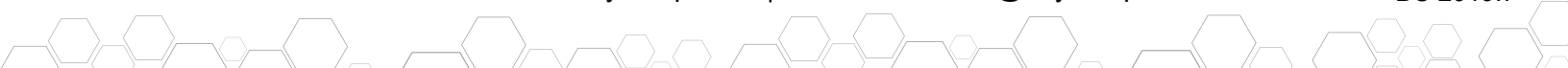
#### 6000 SERIES TECHNICAL SPECIFICATIONS

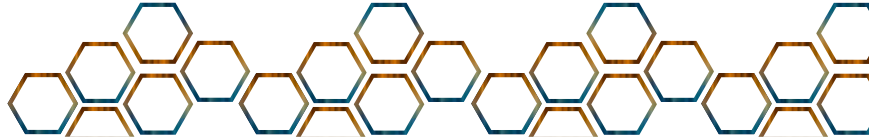
	6105G1	6110G1	6120G1	6210G1	6220G1	6310G3	6320G3	6340G2
Fluid Path	Copper							
Fin Material	Copper							Aluminum
Dry Weight kg (lb)	0.7 (1.5)	0.9 (2.0)	1.6 (3.5)	2.3 (5.0)	3.9 (8.5)	3.9 (8.5)	6.4 (14.0)	13.6 (30.0)
Fluid Volume ml (in <sup>3</sup> )	50 (3)	131 (8)	205 (12.5)	288 (17.5)	500 (30.5)	483 (29.5)	844 (51.5)	1737 (106)
Max Operating Temperature	200° (400°F)							
Pressure Tested	10.3 bar (150 psi)							
Fitting	SB: Straight Fitting							0.875" O.D. union fitting
Fan Plate	Included							
Fan Kit (Optional)	115V or 230V							
# of Fans in Kit	1	1	2	1	2	1	2	4

#### 6000 SERIES FEATURES

- 6000 Series are engineered for performance. The seamless copper tubes are expanded into the fin with an extruded full collar that ensures excellent metal-to-metal contact to optimize thermal performance. Higher tube density results in maximum heat transfer.
- Our thick-walled (0.028"/0.7 mm) seamless copper tubing and fluxless silver-brazed joints ensure the integrity of the fluid path. Heat exchangers are pressure tested to 150 psi (10.3 bar) to guarantee reliability. Units are electro-static dip painted for long life even in corrosive or harsh environments.
- Compatible with water, Ethylene Glycol/Water (EGW) solutions, and other common coolants.

**NOTICE:** This information is being provided for reference purposes only. Boyd Corporation and its affiliates reserve the right to modify or update this information from time-to-time without notice. No representation is made as to the accuracy of and no express or implied warranties are provided for the information or products contained in this data sheet, and no liability shall be assumed for the application or use thereof. For additional information, please contact [customerservice@boydcorp.com](mailto:customerservice@boydcorp.com). © 2019 Boyd Corporation All Rights Reserved



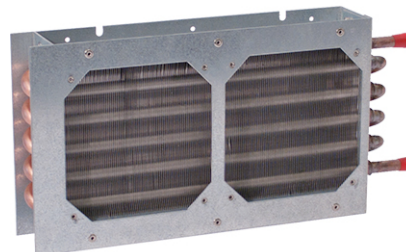


### COPPER TUBE-FIN HEAT EXCHANGERS OEM COILS

#### PRODUCT DESCRIPTION

The OEM Coils copper tube-fin heat exchangers offer high performance and reliability. The OEM Coils heat exchanger has aluminum fins and is unpainted with galvanized steel side plates.

OEM Coils are best suited for the price-sensitive customer in applications where the appearance of the heat exchanger is not critical, such as when the heat exchanger is hidden inside of the equipment.



#### OEM COILS TECHNICAL SPECIFICATIONS

	M05-050	M05-100	M10-080	M10-160	M14-120	M14-240
Fluid Path	Copper					
Fin Material	Aluminum					
Dry Weight kg (lb)	0.9 (2.0)	1.8 (4.0)	2.3 (5.0)	3.6 (8.0)	4.5 (10.0)	7.3 (16.0)
Fluid Volume ml (in <sup>3</sup> )	115 (7)	188 (11.5)	320 (19.5)	549 (33.5)	606 (37)	1090 (66.5)
Max Operating Temperature	200° (400°F)					
Pressure Tested	10.3 bar (150 psi)					
Fitting	SB: Straight Fitting					
Fan Plate	Included					
Fan Kit (Optional)	115V or 230V					
# of Fans in Kit	1	2	1	2	1	2

#### OEM COILS FEATURES

- The OEM Coils are engineered for performance. The seamless copper tubes are expanded into the fin with an extruded full collar that ensures excellent metal-to-metal contact to optimize thermal performance.
- Our thick-walled (0.028"/0.7 mm) seamless copper tubing and fluxless silver-brazed joints ensure the integrity of the fluid path. Heat exchangers are pressure tested to 150 psi (10.3 bar) to guarantee reliability. The 6000 Series units are electro-static dip painted for long life even in corrosive or harsh environments.
- Compatible with water, Ethylene Glycol/Water (EGW) solutions, and other common coolants.

**NOTICE:** This information is being provided for reference purposes only. Boyd Corporation and its affiliates reserve the right to modify or update this information from time-to-time without notice. No representation is made as to the accuracy of and no express or implied warranties are provided for the information or products contained in this data sheet, and no liability shall be assumed for the application or use thereof. For additional information, please contact customerservice@boydcorp.com. © 2019 Boyd Corporation All Rights Reserved

